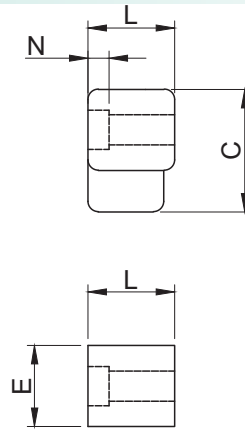
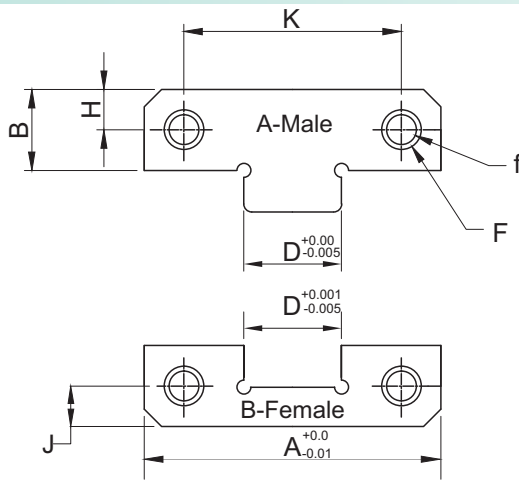


► Straight Block Set (PMSB)

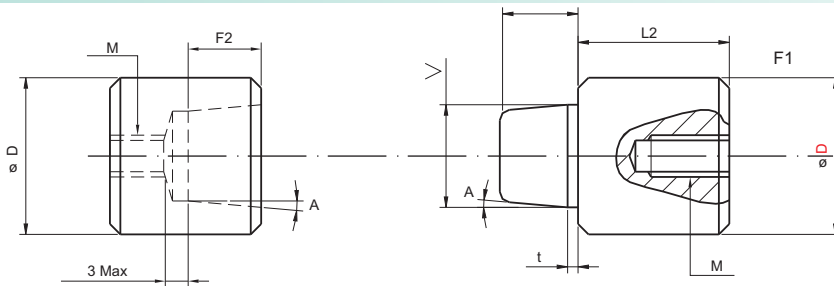


Material :- Tool Steel

Order Type :- Code | Example :- PMSB 50

Code	A	B	C	D	E	F	f	J	H	K	L	M	N
PMSB 38	38	22	30	12	22	10.5	6.5	7	7	22	13	5	8
PMSB 50	50	21.5	30	17	21.5	10.5	6.5	11	11	34	16	5	8
PMSB 75	75	36	50	25	36	16.5	10.5	18	18	50	19	8	12
PMSB 100	100	45	65	35	45	16.5	10.5	22	22	70	19	10	12
PMSB 125	125	45	65	45	45	16.5	10.5	22	22	84	25	10	12

► Taper Interlock (PPTI)



Material :- Tool Steel
Hardness :- 56-60 HRC

Code	D	A	V	L	L1	L2	F1	F2	F3	M
	k6	deg	mm	mm	mm	mm	mm	mm	mm	
PPTI	13	5°	8.5	30	14	14	6	5	10	M4
	16		10	30	14	14	6	5	10	M5
	20		13	40	19	19	9	8	12	M6
	25		16	50	24	24	12	11	16	M8
	30		20	60	29	29	15	14	20	M10
	32		20	60	29	29	15	14	20	M10
	35		24	70	34	34	18	17	24	M12
	42		30	80	39	39	24	23	24	M12

Order Type :- Code X Dia (D) X Length (L) | Example :- PPTI X 25 X 50